

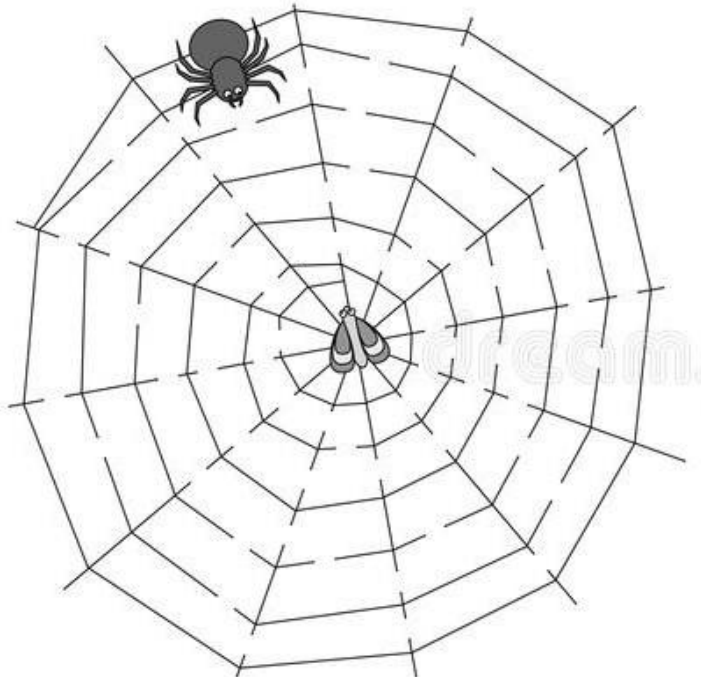
## Sura Ankabut

1. The first ayat of this sura is has three letters of the Arabic alphabet. Can you circle these letters?

ا ب ت ث ج ح خ د ذ ر ز س ش  
ص ض ط ظ ع غ ف ق ك ل م ن ه  
و ي

2. This sura, like all of those in last week's quizzes, starts with special code letters whose meaning only Allah (swt) knows. What is the Arabic name (and its English meaning) given to these special letters? How many suras of the Holy Quran start this way?
3. What is 'Ankabut' in English and in which ayat of this sura is the word used? In your own words, explain the analogy made by this ayat in reference to 'ankabut'.

Help this 'ankabut' find its way to its dinner



4. The Holy Quran poses an interesting question at the beginning of this sura. Read ayats #2-3 and in your own words, describe what Allah (swt) is telling us. Why is this important?

5. In ayat #40 of this sura, the Holy Quran lists a variety of punishments sent upon peoples who rejected the guidance of Allah's (swt) messengers. List each of these disbelievers in accordance with their punishment:

people of Prophet Nuh, people of Thamud, Firawn, people of Prophet Lut, people of Prophet Shuayb, people of Korah.

<u>Storm of stones</u>	<u>Lightning ('the Cry')</u>	<u>Swallowed by earth</u>	<u>Drowned</u>
a)	a)	a)	a)
	b)		b)

6. What did Allah (swt) save Prophet Ibrahim from, according to this sura? Give the ayat number.

Briefly summarise this story of Prophet Ibrahim (you can also refer to sura Anbiya, ayats #51-70) and what we can learn from it.

7. This sura contains the famous phrase: كُلُّ نَفْسٍ ذَائِقَةُ الْمَوْتِ. In which ayat is it found? Give its English translation.

8. According to this sura, which two adjectives are used to describe 'this worldly life'? Give the ayat number

According to this sura, 'salah' prevents what two things? Give the ayat number.

9. What does the Holy Quran tell us in ayat #6 of this sura?

10. What are some things we can do to strengthen our faith in Allah (swt) so that it is not destroyed as easily as a spider web?